



M*CARBO Ruger PC Carbine Exact Edge Extractor & A2 Steel Bolt Head Pins



Download or Print Instructions | Contact: help@mcarbo.com | Page 1

You must be 18 yrs of age to purchase. We advise that all parts purchased from our inventory be installed and inspected by a qualified gunsmith. Modifying your weapon may be prohibited in your state. Do not modify your sear or hammer engagement surfaces. Before installing please be sure to check all local state and federal laws. By installing this part you agree to take full responsibility for any and all legal, health and warranty consequences that may be incurred.



Step 1: Clear your Firearm - Check the chamber, Bolt Face and Magazine Well. Leave the Bolt open for now



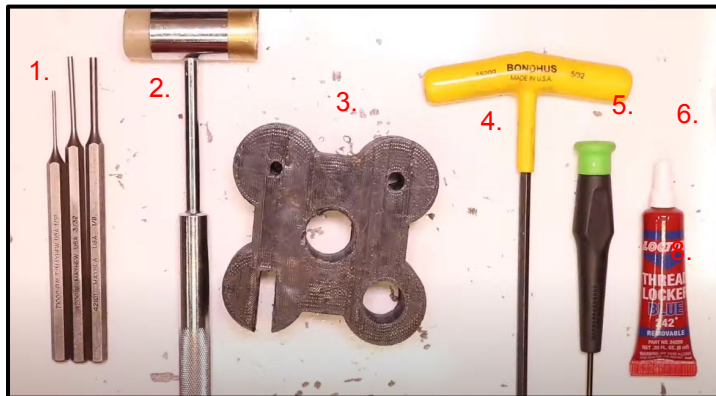
Step 2: Gather Parts Needed.



1. Ruger PC Carbine Exact Edge Extractor
2. Bolt Head Pins/Extraction Pin Set

Step 3: Gather tools needed for installation.

Step 4: Identify the small lock on the underside of the barrel.



1. 1/16", 3/32" and 1/8" Punches
2. Hammer
3. Bench Block
4. 5/32" Allen Key
5. Micro-tip Flathead Screwdriver
6. Blue 242 Loctite
7. Eye Protection





M*CARBO Ruger PC Carbine Exact Edge Extractor & A2 Steel Bolt Head Pins



Download or Print Instructions | Contact: help@mcargo.com | Page 2

You must be 18 yrs of age to purchase. We advise that all parts purchased from our inventory be installed and inspected by a qualified gunsmith. Modifying your weapon may be prohibited in your state. Do not modify your sear or hammer engagement surfaces. Before installing please be sure to check all local state and federal laws. By installing this part you agree to take full responsibility for any and all legal, health and warranty consequences that may be incurred.



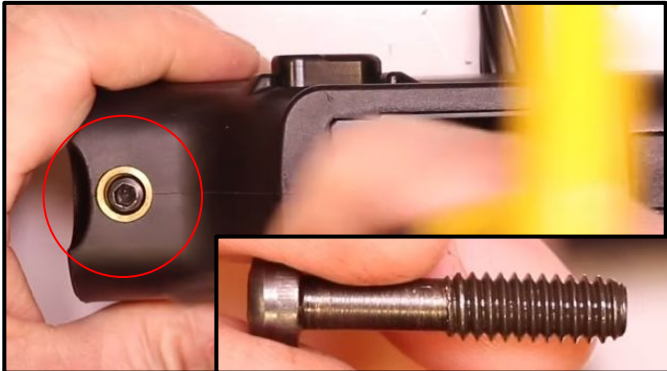
Step 5: Press down on the lock, rotate slightly, and pull off the barrel.



Step 6: Pull your Bolt Forward and turn the firearm upside down.



Step 7: Use your 5/32" Allen Key to remove the two takedown pins.



Step 8: Separate the Receiver by pushing up on the Trigger Group until it is completely separate from the stock.





M*CARBO Ruger PC Carbine Exact Edge Extractor & A2 Steel Bolt Head Pins

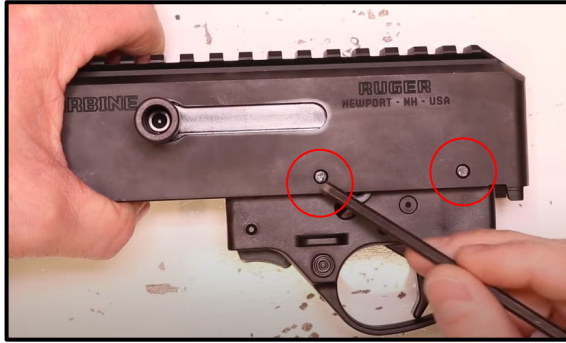


Download or Print Instructions | Contact: help@mcargo.com | Page 3

You must be 18 yrs of age to purchase. We advise that all parts purchased from our inventory be installed and inspected by a qualified gunsmith. Modifying your weapon may be prohibited in your state. Do not modify your sear or hammer engagement surfaces. Before installing please be sure to check all local state and federal laws. By installing this part you agree to take full responsibility for any and all legal, health and warranty consequences that may be incurred.



Step 9: Use your 1/8" Punch to push out the two Trigger Group Pins.



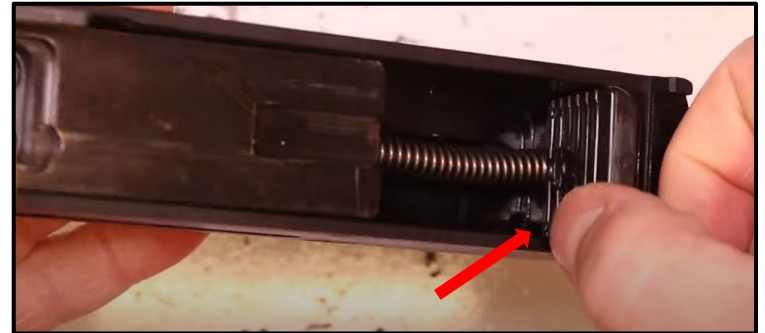
Step 10: Remove the Trigger Group and place it to the side for now.



Step 11: Use your Allen Key to Loosen and Remove the Charging Handle.



Step 12: Locate the Plastic Recoil Buffer and pull up on it.





M*CARBO Ruger PC Carbine Exact Edge Extractor & A2 Steel Bolt Head Pins



Download or Print Instructions | Contact: help@mcarbo.com | Page 4

You must be 18 yrs of age to purchase. We advise that all parts purchased from our inventory be installed and inspected by a qualified gunsmith. Modifying your weapon may be prohibited in your state. Do not modify your sear or hammer engagement surfaces. Before installing please be sure to check all local state and federal laws. By installing this part you agree to take full responsibility for any and all legal, health and warranty consequences that may be incurred.



Step 13: Once the buffer is free, continue pulling up and the bolt should slide out with it.



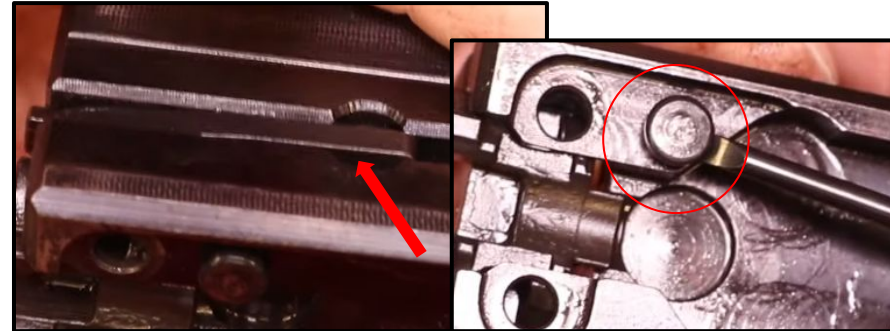
Step 14: Slide off the Bolt top.



Step 15: Push down on the Bolt Head and use your Micro-Tip Screwdriver to pry out the two Bolt Head Pins



Step 16: Push down on the Extractor to ease some tension and use your Micro-Tip to pry out the Extractor Pin.





M*CARBO Ruger PC Carbine Exact Edge Extractor & A2 Steel Bolt Head Pins

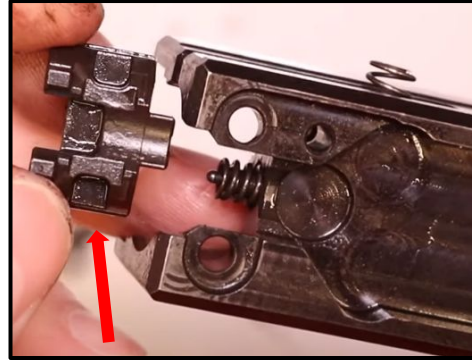
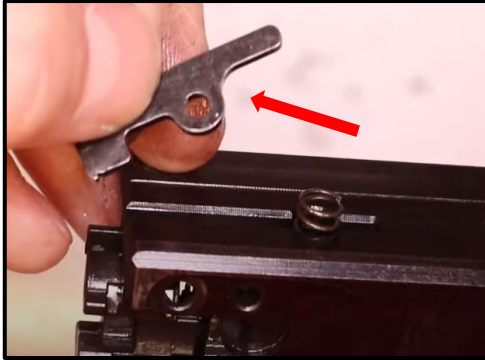


Download or Print Instructions | Contact: help@mcarbo.com | Page 5

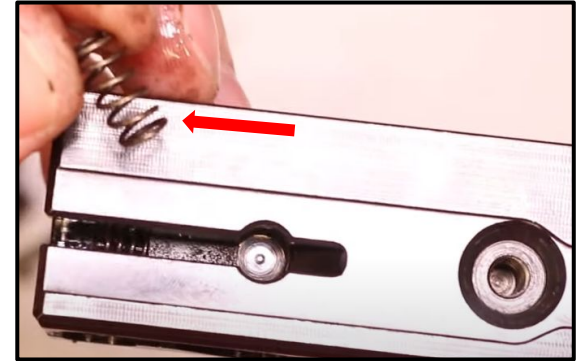
You must be 18 yrs of age to purchase. We advise that all parts purchased from our inventory be installed and inspected by a qualified gunsmith. Modifying your weapon may be prohibited in your state. Do not modify your sear or hammer engagement surfaces. Before installing please be sure to check all local state and federal laws. By installing this part you agree to take full responsibility for any and all legal, health and warranty consequences that may be incurred.



Step 17: Remove the Extractor and Bolt Head



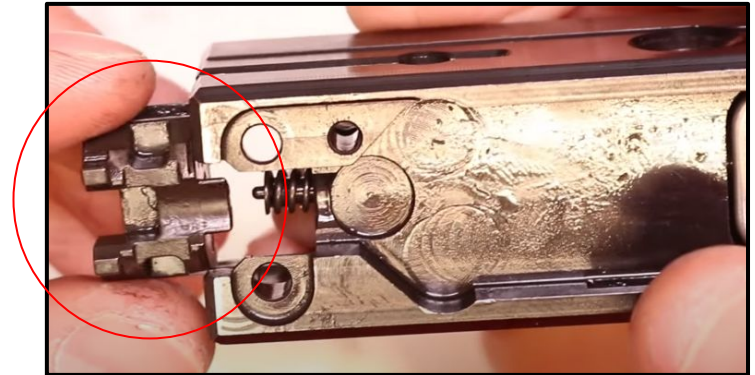
Step 18: Remove the Extractor Spring.



Step 19: Open up your M*CARBO Exact Edge Extractor and Pin Set.



Step 20: Re-Insert the Bolt Head in the proper orientation.





M*CARBO Ruger PC Carbine Exact Edge Extractor & A2 Steel Bolt Head Pins



Download or Print Instructions | Contact: help@mcarbo.com | Page 6

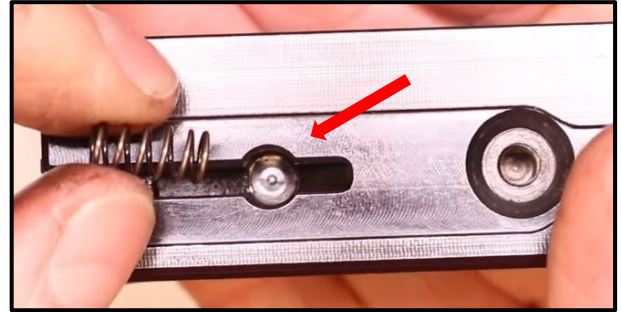
You must be 18 yrs of age to purchase. We advise that all parts purchased from our inventory be installed and inspected by a qualified gunsmith. Modifying your weapon may be prohibited in your state. Do not modify your sear or hammer engagement surfaces. Before installing please be sure to check all local state and federal laws. By installing this part you agree to take full responsibility for any and all legal, health and warranty consequences that may be incurred.



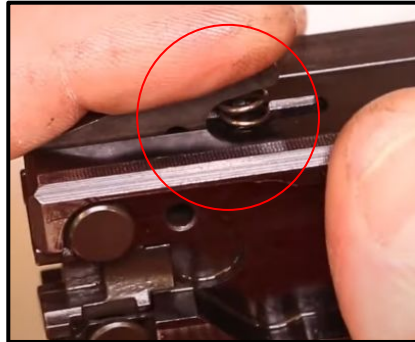
Step 21: Compress the Bolt Head down with your finger and Insert The Bolt Head Pins



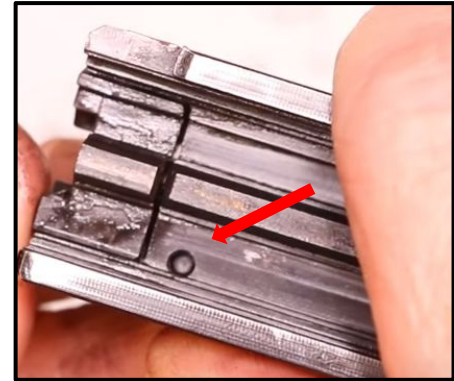
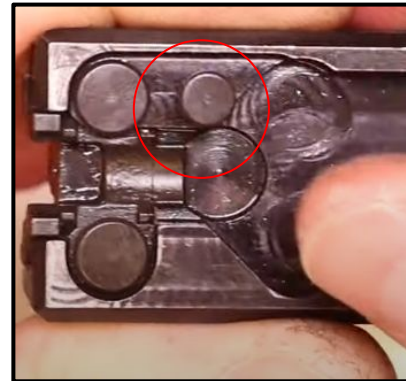
Step 22: Drop the Extractor Spring into the big circle.



Step 23: Drop in the Extractor over the Spring in the below Orientation. Keep your finger on the Extractor.



Step 24: Drop in the Extractor Pin. If necessary to line up the holes, look through the top and push the pin from the underside.





M*CARBO Ruger PC Carbine Exact Edge Extractor & A2 Steel Bolt Head Pins



Download or Print Instructions | Contact: help@mcarbo.com | Page 7

You must be 18 yrs of age to purchase. We advise that all parts purchased from our inventory be installed and inspected by a qualified gunsmith. Modifying your weapon may be prohibited in your state. Do not modify your sear or hammer engagement surfaces. Before installing please be sure to check all local state and federal laws. By installing this part you agree to take full responsibility for any and all legal, health and warranty consequences that may be incurred.



Step 25: Make sure all of the pins are Flat and Fully Located.
Make sure the Bolt Head and Extractor move as well.

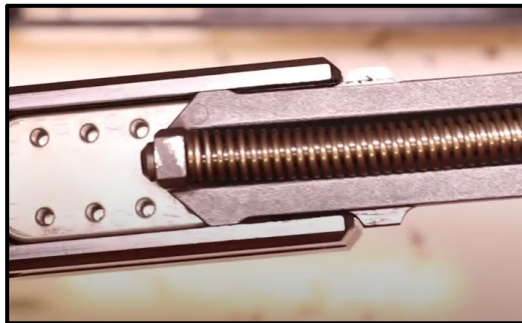


Step 26: Gather all the parts you need to put the Bolt back together.



Step 27: Slide the smooth end of the Bolt Top onto the Bolt

Step 28: Drop the Bolt Assembly into the Receiver at an angle.





M*CARBO Ruger PC Carbine Exact Edge Extractor & A2 Steel Bolt Head Pins



Download or Print Instructions | Contact: help@mcargo.com | Page 8

You must be 18 yrs of age to purchase. We advise that all parts purchased from our inventory be installed and inspected by a qualified gunsmith. Modifying your weapon may be prohibited in your state. Do not modify your sear or hammer engagement surfaces. Before installing please be sure to check all local state and federal laws. By installing this part you agree to take full responsibility for any and all legal, health and warranty consequences that may be incurred.



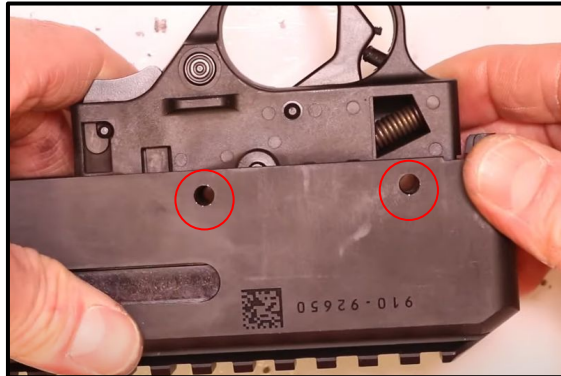
Step 29: Push the Buffer forward into the Receiver, then push down on the Buffer until it fully seats (you should hear a snap)



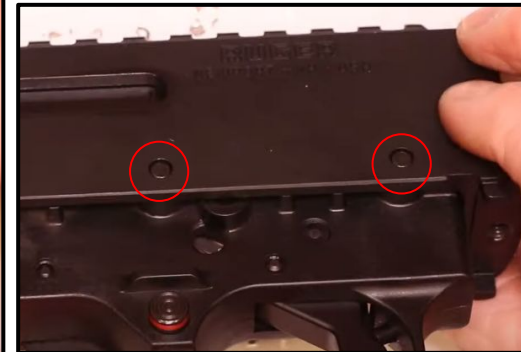
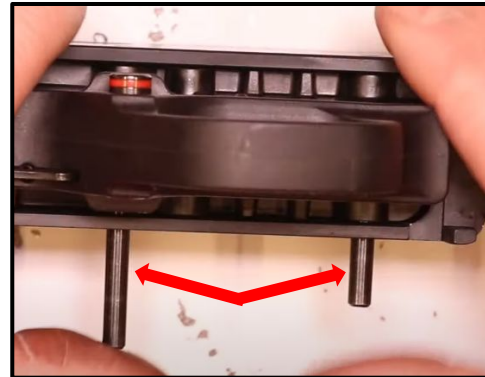
Step 30: Grab your Trigger Group and your Two Trigger Pins.



Step 31: Line up the holes on the Trigger Group and Receiver.



Step 32: Slide in the Two Trigger Pins. Make sure they are Flush.





M*CARBO Ruger PC Carbine Exact Edge Extractor & A2 Steel Bolt Head Pins



Download or Print Instructions | Contact: help@mcargo.com | Page 9

You must be 18 yrs of age to purchase. We advise that all parts purchased from our inventory be installed and inspected by a qualified gunsmith. Modifying your weapon may be prohibited in your state. Do not modify your sear or hammer engagement surfaces. Before installing please be sure to check all local state and federal laws. By installing this part you agree to take full responsibility for any and all legal, health and warranty consequences that may be incurred.



Step 33: Place the stock over the newly assembled Receiver and push down on the table.



Step 34: Reinsert your two Takedown Screws and start them by hand.



Step 35: Use your Allen Key to tighten up the screws.



Step 36: Choose which side you'd like to install your Charging Handle on (It works on either).





M*CARBO Ruger PC Carbine Exact Edge Extractor & A2 Steel Bolt Head Pins



Download or Print Instructions | Contact: help@mcarbo.com | Page 10

You must be 18 yrs of age to purchase. We advise that all parts purchased from our inventory be installed and inspected by a qualified gunsmith. Modifying your weapon may be prohibited in your state. Do not modify your sear or hammer engagement surfaces. Before installing please be sure to check all local state and federal laws. By installing this part you agree to take full responsibility for any and all legal, health and warranty consequences that may be incurred.



Step 37: Put a few drops of Blue Loctite on the threads of the Charging Handle



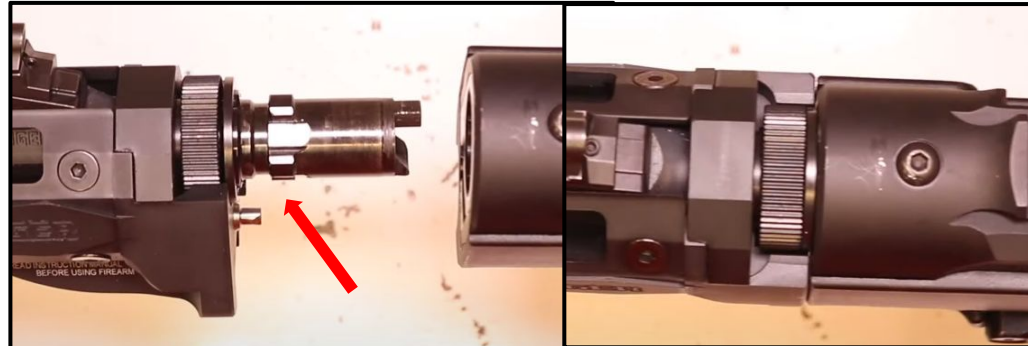
Step 38: Drop in the Charging Handle and tighten it with your Allen Key.



Step 39: Lock the Bolt back before Reattaching the Barrel.



Step 40: Tilt the Barrel at a 45 degree angle and get the lugs to locate. Push the barrel all the way in and turn it so it locks.





M*CARBO Ruger PC Carbine Exact Edge Extractor & A2 Steel Bolt Head Pins



Download or Print Instructions | Contact: help@mcarbo.com | Page 11

You must be 18 yrs of age to purchase. We advise that all parts purchased from our inventory be installed and inspected by a qualified gunsmith. Modifying your weapon may be prohibited in your state. Do not modify your sear or hammer engagement surfaces. Before installing please be sure to check all local state and federal laws. By installing this part you agree to take full responsibility for any and all legal, health and warranty consequences that may be incurred.



That's it! Test the function of the Trigger and the Safety, then
you're good to go!

